

# May grace meet you here . . .

## WELCOME

Prelude *Lord of the Dance*  
Shaker Tune arr. D. Miller

Greeting and Welcome

Passing of the Peace

+Call to Worship

The earth is alive with God's greening power—  
with breath, with beauty, with becoming.

**We gather as part of that living creation.**

Christ the Shepherd calls us by name,  
not to control us, but to lead us into life.

**We come to listen, to follow, to grow.**

**All: Let us worship the God who restores our  
souls and renews the face of the earth.**

+Hymn *The Summons* TFWS #2130  
vs 1-3, 5

Children's Message Amy Allin

+Hymn *Jesus Loves Me* UMH #191  
(vs. 1 children, vs 2-3 children & congregation)

Third Grade Bibles Pre-K Bibles  
Aleah FollensbeeDelong Helen Stenzel  
Lincoln Polk Ian Greenfield

Congregational Response

**We promise to be your companions—  
to listen with you,  
to learn with you,  
to grow with you.**

**We will honor your questions  
and celebrate your discoveries.**

## THE WORD

Scripture Psalm 23

Call to Prayer *O Lord, Hear My Prayer*  
TFWS #2200

Pastoral Prayer and Lord's Prayer

Scripture John 10:1-10

+Hymn *Lead Me, Guide Me* TFWS #2214

Message *Imaginal Disciples*

## THANKSGIVING

Offertory

Offertory Music *Now the Green Blade Riseth*  
Trad. 15th Cent. French Melody  
arr. David Lanz

Offertory Liturgy

**God of greening life, your Spirit moves  
through all creation—restoring, renewing,  
making all things flourish.**

**We offer these gifts as seeds of  
your *viriditas*—your life-giving power at work  
in the world.**

**May they take root in places of need,  
bring healing where there is harm,  
and grow a more just and gentle world for all.  
Amen.**

+Hymn *Lord of the Dance* UMH #261

## BLESSING

Postlude *Jesus Loves Me* Wm. Bradbury  
arr. Paul Clark

—CCLI License No. 1093845 —OneLicense #A-708801

Donna Dempewolf, Pastor  
Kevin Dahle, Reader  
NUMC Band

Kristen Twitchell, Vocals

Ava Podracky, Vocals

Elaine Boda, Cello

Tim Goodwin, Guitar and Harmonica

David Miller, Irish Whistle, Piano, Drums

Mike Legvold, Bass Guitar

**Please note:** At one end of each pew is a  
black covered Friendship Pew Pad. Please  
sign it and pass along your pew for others to  
sign.

## Community Art Exhibit

You're invited to bring your creativity to NUMC  
this June. We welcome a wide range of artistic  
expressions—painting, drawing, stained glass,  
mosaics, quilting, and more. Artwork may be  
dropped off in the church office any time after  
May 20 and will be displayed throughout the  
month. Come share what brings you joy—and  
help fill our space with beauty, imagination, and  
inspiration.

## If you are new here . . .

- ✧ We are so glad you joined us!
- ✧ **If you would benefit from a large print bulletin or a hearing assistance device, please ask an usher.**
- ✧ +Please stand as able when you see this symbol as we move through the order of worship.
- ✧ Words for congregational liturgy and song are listed in the bulletin or projected on the screen at the front of the sanctuary. Most hymns can be found in the hardcover *United Methodist Hymnal* (2-3 digit) or soft cover *The Faith We Sing* (4 digit) located in the pews. We also have Bibles for following along with Scripture.
- ✧ Check our website for more information.

### For Parents

- ✧ Want to learn more about NUMC's ministry with children, youth, and families? Join our email list! [info@northfieldumc.org](mailto:info@northfieldumc.org)
- ✧ Staffed nursery available for children during worship.

### Northfield United Methodist Church Mission

We are companions in Christ, called, nurtured, and sent out for this purpose: to glorify God by acts of worship, devotion, compassion, and justice.

Donna Dempewolf, Pastor  
Kristen Twitchell, Interim Youth Director  
Izel Thoele, Youth & Children's Intern  
Jane Dagher, Youth & Children's Intern  
Ruth Kruse, Parish Nurse  
For more information visit our website at [www.northfieldumc.org](http://www.northfieldumc.org).  
Miss a week?  
Watch our worship service online on our website!

*Jesus Christ calls us to offer welcome, hospitality and God's gracious love to all.*

## Upcoming Events

### Sundays

9:30 am – Worship  
9:40 am – Children's Church  
**Final Children's Church, May 17**  
10:30 am – Coffee in Fellowship Hall  
10:30 am – Adult Faith Formation

### Wednesdays

3:30 – 5:30 pm, (K-5<sup>th</sup>) Fun, Faith & Food Snack  
5:30-6:15 pm – Community Meal  
6:15 pm – Adult Choir  
6:30 pm – Handbell Choir  
6:30 pm – Youth Fellowship  
**Final Super Wednesday, May 3**

### Upcoming Events

**Women's Bible Study**, Tuesday, April 28, 9:00 am, room #120  
**Mission Sewing**, Wednesday, April 29, 9:00, room #120  
**Men's Breakfast**, Friday, May 1, 8:00 am, Fellowship Hall

### Adult Faith Formation

**4/12-5/3: Spirituality of Earth and Resurrection:**  
Four-week exploration of the unique person, spirituality and teachings of Hildegard of Bingen, a German Benedictine abbess, mystic, musician, early naturalist and holistic teacher. Led by Dr. Almut Furchert.

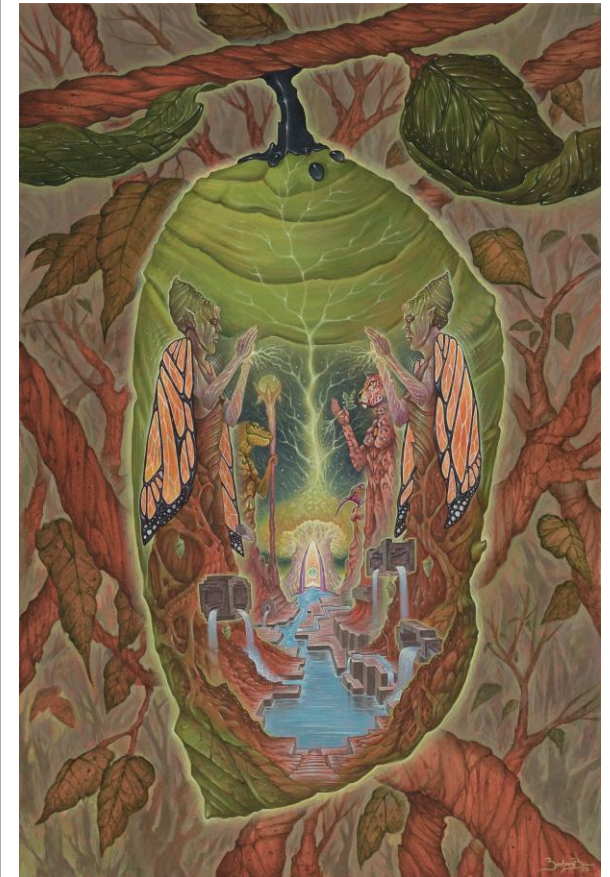
### Tree Planting

If you wish to donate towards the cost of the 10 trees that were planted on April 25<sup>th</sup> to offset the approximate \$300 cost per tree you can do so by making a check payable to NUMC and designate "Trees" in the memo.

Worship.  
Devotion.



Compassion.  
Justice.



## Imaginal Disciples

April 26, 2026  
9:30 am

Northfield United Methodist Church

1401 S. Maple Street  
Northfield, MN 55057

Phone: 507-645-5689  
Email: [info@northfieldumc.org](mailto:info@northfieldumc.org)  
Website: [www.northfieldumc.org](http://www.northfieldumc.org)